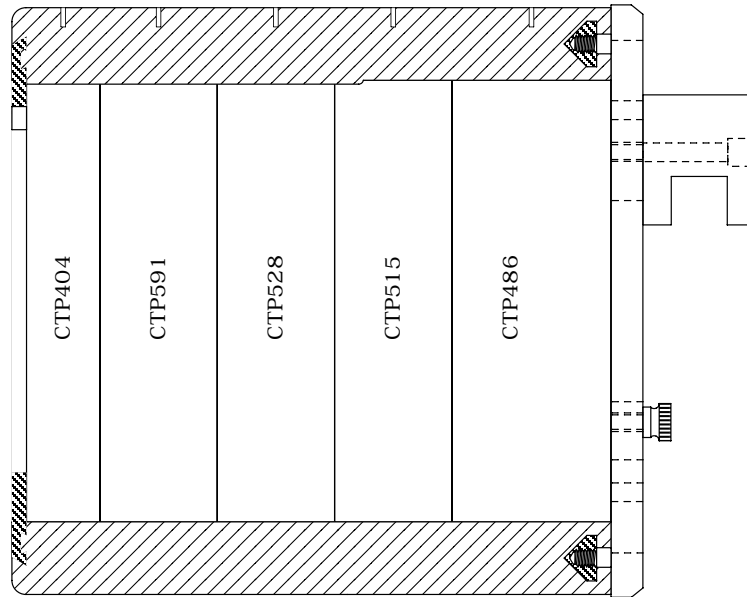


part number
CTP600

page 1 of 1

Catphan600建立在Catphan500模型的能力基础上,以实现多层CT的最佳性能表征和放射治疗所需的增强的感光测量。Catphan600增强了测量功能,可精确测量多切片扫描仪中的薄片和更高分辨率。



Catphan® 600

The Catphan® 600 was designed to evaluate the maximum performance potential of multi-slice CT Scanners.

The Catphan® 600 combines the internationally recognized CTP528 and CTP515 modules contained in the Catphan® 500 with the versatility of the CTP591 slice geometry and point source bead module. The CTP591 bead module contains both coarse ramps (1mm z axis increments) and precision ramps (.25mm z axis increments) for evaluation of millimeter and sub-millimeter thin slices. Additionally the number of sensitometry samples has been increased.

Tests - Summary

- scan slice geometry (slice width and slice sensitivity profile)
 - o slice width (wire ramps and bead ramps)
 - o slice sensitivity profile (single slice or multiple slices)
 - o x-y distance verification (50mm spaced rods)
- high resolution (up to 21 line pairs per cm)
- phantom position verification
- patient alignment system check
- low contrast sensitivity (40mm length solid cast targets)
- comparative subslice and supra-slice low contrast sensitivity
- spatial uniformity
- scan incrementation
- noise (precision) of CT systems
- circular symmetry
- sensitometry (linearity samples: air, PMP, LDPE, H₂O, Polystyrene, Acrylic, Delrin, Teflon)
- pixel (matrix) size
- point spread function and modulation transfer function (MTF) for the x, y, and z axes



深圳为尔康科技有限公司 联系人：曾祥满 手机：13632925349

QQ：274798107 电话：0755- 28896837 地址：深圳市龙岗区沙平北路111号608A

网址：www.medicalQC.com 邮箱：szchina1718@163.com